

Finger Spelling

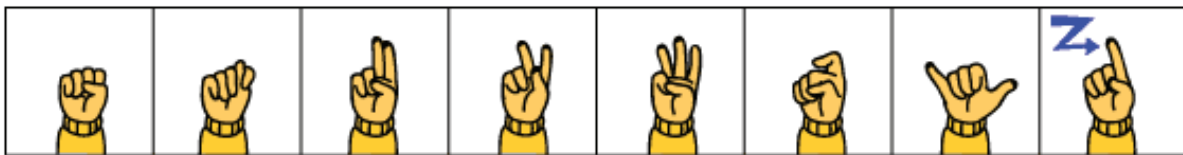
ALPHABET



A B C D E F G H I



J K L M N O P Q R



S T U V W X Y Z

NUMBERS 1-10



1 2 3 4 5



6 7 8 9 10

Finger spelling notes:

Some of the hands above are turned to make the signs easier to learn. The letter H is actually done with your palm facing your body. For all the other letters, your palm faces the listener. For the numbers, 1-5 face toward you; 6-10 face the listener.

The letter G can be done as shown, or turned to the side, with your thumb and forefinger on top.

Keep your hand steady; don't "bounce" it with each letter.

The letters above show the "proper" formation. Feel free to make small variations to keep your hand comfortable.